



VALVES

PRODUCT CATALOGUE



TECHNICAL EXCELLENCE IN
FLUID CONTROL SINCE 1903

Suppliers of Industrial Valves

Suited for Steam, Water, Oil and Gas

Stewarts & Lloyds are **experts in valve supply** for steam, water, oil and gas. Our extensive range of products will meet your needs, whatever the application. Providing valves to major industrial projects in Southern Africa and sub-Saharan Africa is something we are experienced in, so you can rest assured you're in the most capable hands.

Our valves can be used across most **industries** including **Water reticulation, Irrigation, Sewage, Mining, Power Generation, Manufacturing, Oil and Gas**. The valves are designed for use in various temperature and pressure environments. We also supply non-standard valves which can be adapted to your specific application requirements. We'll work with you to ensure you get the right valve to keep your equipment working at its finest.

Our products are used by **industry professionals**, including **designers, developers, contractors and manufacturers**. As a value-added service, we provide design assistance, comprehensive spare parts solutions, repairs, and rebuilds to assist with your projects. We have the expertise to assist you in selecting the correct quality valves at the best price, whether you need them for resale or plant/factory installation.



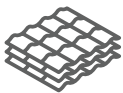
Across Industries

Stewarts & Lloyds Valves supply steam, water, oil and gas valves for use in the agricultural, mining, chemical, construction, power, water, food and general engineering industries.



For Many Applications

Valve types include flanged, plain-ended, socketed, screwed, shouldered, weld ends and wafer type.



In Different Materials

Materials for the valve body and seat include brass, bronze, carbon steel, cast Iron, stainless steel, glass filled PTFE and plastics.



Visit Our Website

For more information on the valves we supply, along with technical data, technical specifications, and other information to assist you in selecting the right product, please visit our website.

<https://stewartsandlloydsvalves.co.za>



Brass Gate Valves

GATE	Size Range	15NB to 100NB
	Pressure Class	PN25, Scr. Ends
	Materials of Construction	Body: Brass Bonnet and Gate: Brass
	Seat	Brass



CXC Ended Brass Gate Valves

GATE	Size Range	15NB & 22NB
	Pressure Class	PN16
	Materials of Construction	Body, Bonnet, Stem & Disc: Brass
	Seat	Brass



Swing, Inline Disc, Lift Type

CHECK	Size Range	10NB to 100NB
	Pressure Class	PN16, 1000 WOG, Scr. Ends
	Materials of Construction	Brass, Bronze
	Seat	PTFE Teflon, Brass, Nitrile



Foot Valves

CHECK	Size Range	25NB to 100NB
	Pressure Class	PN16, Scr. Ends
	Materials of Construction	Body: Brass
	Seat/Seals	NBR



Ball Float Valves

FLOAT	Size Range	15NB to 50NB
	Pressure Class	PN16, Scr. Ends
	Materials of Construction	Body: Brass, Stainless Steel Ball: Plastic, Copper, Stainless Steel
	Seat	EPDM



Pressure Reducing Valves

CONTROL	Size Range	10NB to 50NB
	Pressure Class	PN16, Scr. Ends
	Materials of Construction	Brass
	Seat	Metal



Globe Valves

GLOBE	Size Range	15NB to 50NB
	Pressure Class	PN25, Scr. Ends
	Materials of Construction	Bronze
	Seat	PTFE Teflon



Stop Cocks

GLOBE	Size Range	15NB & 20NB
	Pressure Class	PN6, Scr. Ends
	Materials of Construction	Brass
	Seat	NBR



Bib Taps

GLOBE	Size Range	15NB & 20NB
	Pressure Class	PN6, M Scr. Hose Connection
	Materials of Construction	Brass
	Seat	Brass



Brass Screwed Air Valves

AIR VALVES	Size Range	15NB to 25NB
	Pressure Class	PN16, Scr. Ends
	Materials of Construction	Body: Brass Float: Plastic O-Rings & Seals: EPDM



Y Type Strainer, Scr. Ends

STRAINER	<i>Size Range</i>	100NB
	<i>Pressure Class</i>	PN20 Scr. Ends
	<i>Materials of Construction</i>	Body: Brass Screen: Stainless Steel



CXC Ended Ball Valves

BALL	<i>Size Range</i>	15NB & 22NB
	<i>Pressure Class</i>	PN25
	<i>Materials of Construction</i>	Brass Ni-Plated
	<i>Seat/Seals</i>	PTFE Teflon



Gas Ball Valves, SAGA Approved

BALL	<i>Size Range</i>	8NB to 50NB
	<i>Pressure Class</i>	PN40
	<i>Materials of Construction</i>	Body: Brass Chrome-plated
	<i>Seat/Seals</i>	PTFE Teflon



Full Bore, 2-Pce Ball Valves

BALL	<i>Size Range</i>	10NB to 100NB
	<i>Pressure Class</i>	PN25, 1000 WOG, Scr. Ends
	<i>Materials of Construction</i>	Body: Brass Chrome-plated Ball: Brass-plated
	<i>Seat/Seals</i>	PTFE Teflon



3 Way Ball Valves, L&T Port, Scr. Ends

BALL	<i>Size Range</i>	10NB to 25NB
	<i>Pressure Class</i>	PN20
	<i>Materials of Construction</i>	Body: Brass Chrome-plated (Stainless Steel on request) Stem/Spindle: Stainless Steel Ball: Brass Chrome-plated
	<i>Seat/Seals</i>	Glass filled PTFE



1-Pce, 2-Pce & 3-Pce Scr. Ends

BALL	<i>Size Range</i>	10NB to 100NB
	<i>Pressure Class</i>	1000 WOG, 63 Bar
	<i>Materials of Construction</i>	Body: CF8M/316 SS Stem/Spindle: 304/316 SS Ball: 304/316 SS
	<i>Seat/Seals</i>	Glass-filled PTFE



2-Pce Flg. Ends

BALL	<i>Size Range</i>	15NB to 200NB
	<i>Pressure Class</i>	PN16, ASA 150#, ASA 300#
	<i>Materials of Construction</i>	Body: CF8M/316 SS, WCB/Carbon Steel Stem/Spindle: 304/316 SS Ball: 304/316 SS
	<i>Seat/Seals</i>	Glass-filled PTFE



1-Pce, 2-Pce & 3-Pce Ball Valve, Scr. Ends, Pneumatic Actuated SR/DA

ACTUATED	<i>Size Range</i>	10NB to 100NB
	<i>Pressure Class</i>	1000 WOG, 63 Bar
	<i>Materials of Construction</i>	Body: CF8M/316 SS Stem/Spindle: 304/316 SS Ball: 304/316 SS
	<i>Seat/Seals</i>	Glass-filled PTFE



2-Pce Ball Valve, Flg. Ends, Pneumatic Actuated SR/DA

ACTUATED	<i>Size Range</i>	15NB to 200NB
	<i>Pressure Class</i>	PN16, ASA 150#, ASA 300#
	<i>Materials of Construction</i>	Body: CF8M/316 SS, WCB/Carbon Steel Stem/Spindle: 304/316 SS Ball: 304/316 SS
	<i>Seat/Seals</i>	Glass-filled PTFE



1-Pce, 2-Pce & 3-Pce Ball Valve, Scr. Ends, Electric Actuated

ACTUATED	<i>Size Range</i>	10NB to 100NB
	<i>Pressure Class</i>	1000 WOG, 63 Bar
	<i>Materials of Construction</i>	Body: CF8M/316 SS Stem/Spindle: 304/316 SS Ball: 304/316 SS
	<i>Seat/Seals</i>	Glass-filled PTFE
	<i>Voltage</i>	380V, 220V, 110V, 24V



2-Pce Ball Valve, Flg. Ends, Electric Actuated

ACTUATED	Size Range	15NB to 200NB (Larger on request)
	Pressure Class	PN16, ASA 150#, ASA 300#
	Materials of Construction	Body: CF8M/316 SS, WCB/Carbon Steel Stem/Spindle: 304/316 SS Ball: 304/316 SS
	Seat/Seals	Glass-filled PTFE
	Voltage	380V, 220V, 110V, 24V



Vent/Vacuum

AIR VALVES	Size Range	25NB to 200NB
	Pressure Class	PN 10, PN16, PN25, PN 40, Scr/Flg
	Materials of Construction	Body: LX: 304 S.S. LS: 304 S.S. LN: Molybdenum Reinforced Nylon Floats: High Density Polyethylene
	Seat/Seals	EPDM/Nitrile



Lever and Gear Operated, SATAS Approved

BUTTERFLY	Size Range	50NB to 800NB
	Pressure Class	PN16 Wafer, Semi-lugged, Full-lugged and Double Flanged
	Materials of Construction	Body: Ductile Iron, Disc: Ductile Iron Ni-plated, 316 Stainless Steel
	Seat	EPDM, Nitrile on request ex factory



Shouldered End, Wafer, SATAS Approved

BUTTERFLY	Size Range	50NB to 200NB
	Pressure Class	PN25
	Materials of Construction	Body: Ductile Iron Gate: Ductile Iron EPDM Encapsulated
	Seat	Disc: EPDM Encapsulated Ductile Iron Disc



Double Off Set Butterfly Valve

BUTTERFLY	Size Range	100NB to 1000NB
	Pressure Class	PN16 & PN25
	Materials of Construction	Body: Ductile Iron Disc: Ductile Iron
	Seat	EPDM



Eco Pattern Butterfly Valves, SATAS Approved

BUTTERFLY	Size Range	50NB to 300NB
	Pressure Class	PN16 Wafer, Lever/Gear Op Fits between: PN16/10, T/D&T/E, ANSI 150#
	Materials of Construction	Body: Ductile Iron Disc: Ductile Iron Ni Plated, 304/316 SS Seat: EPDM
	Seat	EPDM, Nitrile



Butterfly Valve, Pneumatic Actuated

ACTUATED	Size Range	50NB to 300NB (Larger on request)
	Pressure Class	PN16
	Materials of Construction	Body: Ductile Iron Stem/Spindle: Stainless Steel Disc: DI Nickel Plated 304/316 SS
	Seat/Seals	EPDM



Butterfly Valve, Electric Actuated

ACTUATED	Size Range	50NB to 300NB
	Pressure Class	PN16
	Materials of Construction	Body: Ductile Iron Stem/Spindle: Stainless Steel Disc: DI Nickel Plated 304/316 SS
	Seat/Seals	EPDM
	Voltage	380V, 220V, 110V, 24V



Wafer Single & Dual Plate Valves

CHECK	Size Range	50NB TO 450NB
	Pressure Class	PN16 & PN25
	To Suit Flange Drillings	Single Plate: T/D, T/10, T/16, T25 Dual Plate: T/10, T16, T25
	Materials of Construction	Body: Ductile Iron, Carbon Steel, 304/316 Stainless Steel Discs: Ductile Iron, 304/316 Stainless Steel
	Seat	EPDM (Nitrile on request), Metal Seated



Flanged, Swing & Ball Type

CHECK	Size Range	50NB TO 350NB
	Pressure Class	PN16
	Materials of Construction	Body: Ductile Iron Discs: Ductile Iron, EPDM Ball: Aluminium EPDM Encapsulated
	Seat	Metal, EPDM



Y Type Strainer, SATAS Approved

STRAINER	Size Range	50NB to 300NB
	Pressure Class	PN16
	Materials of Construction	Body: Ductile Iron Epoxy Coated Basket: Stainless Steel
	Seat	EPDM



Shouldered End, 665 Gate Valve, SATAS Approved

GATE	Size Range	50NB to 200NB
	Pressure Class	PN25
	Materials of Construction	Body: Ductile Iron Gate: Ductile Iron EPDM Encapsulated
	Seat	Disc: EPDM Encapsulated Ductile Iron Disc



665 OS&Y Flg. Ends, SATAS Approved

GATE	Size Range	50NB to 600NB
	Pressure Class	PN16 & PN25
	Materials of Construction	Body: Ductile Iron Epoxy Coated Gate: Ductile Iron EPDM Encapsulated
	Seat/O-Rings	EPDM / Nitrile O-Rings



664 NRS Flg. & Spigot LH/RH Closing, SATAS Approved

GATE	Size Range	50NB to 300NB
	Pressure Class	PN16 & PN25
	Materials of Construction	Body: Ductile Iron Epoxy Coated Stem/Spindle: Stainless Steel Gate: EPDM Encapsulated
	Seat/O-Rings	EPDM
	End Connections	PN16/25 Flg. & PN16 Spigot



Salvalve Hydraulic Control Valve

CONTROL	Size Range	50NB to 600NB
	Pressure Class	PN10 & PN25
	Materials of Construction	Body & Bonnet: Ductile Iron Body Seat & Valve Shaft: Stainless Steel Disc Seal: EPDM Actuator Diaphragm: Reinforced EPDM
	Seat	EPDM
	Valve Functions	Pressure Reducing, Pressure Sustaining/ Relief, Level Control (Modulating, Bi-Level & Altitude Control)



OS&Y Flg/Grooved, 665 UL/FM

FIREFIGHTING	Size Range	50NB to 450NB
	Pressure Class	PN16
	Materials of Construction	Body: Ductile Iron Disc: Ductile Iron EPDM Encapsulated



Check Valve Dual Plate, Wafer UL/FM

FIREFIGHTING	Size Range	10NB to 250NB
	Pressure Class	PN16
	Materials of Construction	Body: Ductile Iron, Epoxy Coated Discs: Ductile Iron Ni-plated
	Seat	EPDM



Check Swing Type, Flg. UL/FM

FIREFIGHTING	Size Range	50NB to 200NB
	Pressure Class	PN16
	Materials of Construction	Body: Ductile Iron, Epoxy Coated Disc: Ductile Iron
	Seat	EPDM



Check Swing Type, Grooved End UL/FM

FIREFIGHTING	Size Range	50NB to 150NB
	Pressure Class	PN16
	Materials of Construction	Body: Ductile Iron Epoxy Coated Disc: Ductile Iron EPDM Encapsulated
	Seat	EPDM



Butterfly Grooved, Lever Operated

FIREFIGHTING	Size Range	50NB to 300NB
	Pressure Class	PN16
	Materials of Construction	Body: Ductile Iron
	Seat	Disc: EPDM Encapsulated Ductile Iron Disc



Butterfly Wafer Pattern, Monitored Gear Operated, UL/FM

FIREFIGHTING	Size Range	50NB to 300NB
	Pressure Class	PN16
	Materials of Construction	Body: Ductile Iron Epoxy Coated Ductile Iron Disc EPDM Encapsulated
	Seat	EPDM



Butterfly Grooved End, Monitored Gear Operated, UL/FM

FIREFIGHTING	Size Range	50NB to 200NB
	Pressure Class	PN16
	Materials of Construction	Body: Ductile Iron Epoxy Coated Ductile Iron Disc EPDM Encapsulated
	Seat	EPDM



Y Strainer Flg. UL only

FIREFIGHTING	Size Range	50NB TO 150NB (Larger on Request)
	Pressure Class	PN16
	Materials of Construction	Body: Ductile Iron, Epoxy coated Screen: Stainless Steel



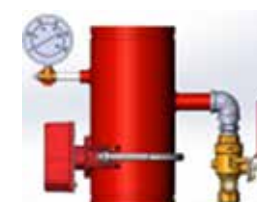
Flow Switch for Std. & Retarded Test Stations

FIREFIGHTING	Size Range	50NB to 250NB
	Pressure Class	PN10, PN16, PN25
	Materials of Construction	Body: Ductile Iron Housing: Aluminium



Grooved End Test Station UL/FM Approved

FIREFIGHTING	Size Range	Up to 200 NB
	Pressure Class	PN16
	Materials of Construction	Carbon Steel Epoxy Coated
	Seat	Std. Clamp Seals
	Added Components	Gauges, Ball Valves, Flow Switches UL/FM



Limit Switch to Retrofit the 665 Gate Valve

FIREFIGHTING	Size Range	One Size Fits All
	Materials of Construction	Aluminium, Steel



Knife Gate Valves, Handwheel Operated & Actuated

GATE	Size Range	50NB to 600NB (Larger on request) Uni & Bi-direction
	Pressure Class	PN16 (Higher pressures on request)
	Materials of Construction	Body: SG Iron, Cast Carbon & Stainless Steel 304/316 Fabricated, Full Moulded Polyurethane Sleeve/Rubber-lined Blade/Gate: Stainless Steel Stem/Spindle: 304/316 Stainless Steel
	Seat	Elastomer/Polyurethane
	Operation	Handwheel, Gear Box, Actuator



Knife Gate Valves (Heavy Pattern)

GATE	Size Range	50NB to 600NB (Larger on request)
	Pressure Class	PN10, Wafer style (Higher pressures on request)
	Materials of Construction	Body: Cast Iron Blade/Gate and Shaft: Stainless Steel
	Seat	Metal or Rubber
	Operation	Handwheel, Gear Box, Actuator



Diaphragm Valves (KB Type)

DIAPHRAGM	Size Range	50NB to 300NB
	Pressure Class	PN6 to PN10, Flanged
	Materials of Construction	Body: Cast Iron, soft rubber lined Bonnet: Cast Iron, Natural rubber Diaphragm



A & KB Type, Screwed Ends, Unlined

DIAPHRAGM	Size Range	20NB to 50NB Screwed BSP
	Pressure Class	PN10
	Materials of Construction	Cast Iron (Unlined)
	Seat	EPDM Rubber Diaphragm



Rubber Flexible Joints Single and Double Sphere

BELLOWS	Size Range	32NB to 600NB (Flg) 32NB to 80NB (Union Scr.)
	Pressure Class	PN10 & PN16
	Materials of Construction	Bellow: Nylon reinforced EPDM Flanges: Carbon Steel Union Assembly: Malleable iron



Balancing Valve (Fixed Orifice)

HVAC	Size Range	15NB to 50NB (Scr.) 65NB to 300NB (Flg.)
	Pressure Class	PN16
	Materials of Construction	Body: Bronze (Scr.), Ductile Iron (Flg.) Bonnet and Trim: Brass
	Seal	NBR, Teflon



Self-Cleaning Filter Station

FILTERS	Size Range	20NB to 100NB (Built up into unit to give required flow) Manifold Inlet/Outlet Size Range: Up to 300NB
	Pressure Class	PN10
	Materials of Construction	Manifold: HDPE/Stainless Steel Disc Filters: Polypropylene
	Seat/Seals	Suitable Elastomers



Y Type Strainers

STRAINERS	Size Range	20NB to 80NB
	Pressure Class	PN8 (Scr. & Flg.)
	Materials of Construction	Screen: 304/316 SS Mesh Discs: Polypropylene
	Seat/Seals	Suitable Elastomers



Nylon Control Valves

CONTROL VALVES	Size Range	40NB to 150NB (Scr. & Flg.) 40NB & 50NB (Scr. BSPT & NPT) 50NB (BSPT, NPT, VIC) 100NB & 150NB (Flg.)
	Pressure Class	PN 0,35 to 10 (Adjustable)
	Materials of Construction	Body: Nylon Stem/Spindle: 304/316 SS
	Seat/Seals	Suitable Elastomers
	Configuration Functions	Manual On/Off, Solenoid On/Off, Pressure Reducing, Pressure Sustaining, Pressure Relief, Float Level Control



DOMESTIC WATER METERS

VOLUMETRIC WATER METERS

V110 NRV KSM Ploymer Body



15mm 114, 15mm 165, 20mm 165 & 25mm 198. Class C.
20mm 114 KSM Class D accuracy.
(available on request)

VOLUMETRIC WATER METERS

V110 NRV PSM DZR Brass Body



15mm 114, 15mm 165, 20mm 165 & 25mm 198. Class C.
20mm 114 KSM Class D accuracy.
(available on request)

SURFACE METERBOXES

STANDARD POLYMER METERBOX



Suitable for all 165mm body length meters (Volumetric and Multijet).
Municipal 3-way polymer ball valve (open, closed or trickle) with optional lock shield.
External connections:
20mm female threaded.

STANDARD RDP4 CONTRACTORS POLYMER METERBOX



15mm and 20mm 114 meter.
Municipal 3-way polymer ball valve (open, closed or trickle) with optional lock shield.
External connections:
20mm female threaded.

ABOVE GROUND METERBOXES

ZONKE ABOVE GROUND POLYMER METERBOX



Suitable for all 114mm and 198mm body length meters (Volumetric and Multijet).
25mm internal piping.
Municipal 3-way polymer ball valve.
External connections:
20mm female threaded.
Note: Also available in pre-paid configuration

ZONKE LITE ABOVE GROUND POLYMER METERBOX



Convex shaped polymer above ground meter box. Suitable for 15mm 114 and 20mm 114 body length.
Municipal 3-way ploymer ball valve (open, closed or trickle).
Optional lock shield for ball valve.
External connections:
20mm female threaded.
Note: Also available in pre-paid configuration.

EZ3 ABOVE GROUND POLYMER METERBOX



15mm V110 NRVK SM 114 meter.
25mm internal piping.
Municipal 3-way ploymer ball valve (open, closed or trickle) with optional lock shield.
Consumer 2-way polymer ball valve.
External connections:
20mm female threaded.

BULK WATER METERS

HELIX H4000 WOLTMAN WATER METER



Range:

40/50/80/100/150/200/250/300mm
Interchangeable internal mechanism.
Suitable for forward and reverse flow
measuring. Versatile bi-directional
inductive pulse output with external
PR7 Pressure tapping.

Max working pressure: 1600 kPa.

C400 IN-LINE COMBINATION WATER METERS



Consisting of an H4000 Woltmann
helical vane inferential type water
meter and an integral V220 class C
bypass meter.

Range in mm: 50/80/100.

Max working pressure: 1600 kPa.

PRE-PAID: STS SOLUTIONS

STANDARD TRANSFER APPLICATIONS (STS)

The STS pre-paid meter runs on
globally accepted standards for
**prepayment and is interoperable
with different STS** compliant vending
platforms.



WALL MOUNTED PRE-PAID METERBOX AND ZONKE METERBOX

15mm V110 NRV KSM 114 meter.
Municipal 3-way polymer ball valve
(open, closed or trickle) with optional
lock shield.

External connections: 20mm female
brass threaded coupling.

PRE-PAID COMMUNAL STAND PIPE & STAND PIPE LITE



Designed to control dispensing of pre-
paid water to communal sites with no
individual household connections. Use
same components i.e. Pulse output
KSM meters, Isolating latching valve and
Electronic control box (just configured
differently) as domestic pre-paid meter.
Stainless steel meterbox (also available
in mild steel). Manage free basic water.
Tamper detection. Replaceable battery.
Battery life up to 3 years, depending on
number of users.

SMART METERING SOLUTIONS

INTELLIGENT METER READING SOLUTION (RF)



Fixed network link between water meters
and web based interface. Long range
remove water meter monitoring system
also end-user mobile interface. Low
power WAN. Up to 3 000 meters per
gateway. Up to 12km LOS.
Developed for IoT networks.

GSM SOLUTION



Flow and pressure logging.
Web based interface. Suitable
for any pulse output water
meter. Data import and export.
Alarms. Automated reporting.
Interactive geographic maps.

WALK OR DRIVE-BY AMR



Wireless meter module
transmits up to km to hand held
unit. Reading modes include
peer to peer, group polling
or GPS automated polling.
Leak detection. Consumption
profiles. Automated or manual
reading input.



HEAD OFFICE

BEDFORDVIEW
Gauteng

011 553 8500

SOUTH AFRICA

ALRODE (SOUTH)
Gauteng

011 900 4270

BLOEMFONTEIN
Free State

051 434 3591

BOKSBURG
Gauteng

011 917 7963

BOOYSENS
Gauteng

011 496 3000

BRITS
North West

012 252 0256

CENTRAL PROCUREMENT
& DISTRIBUTION CENTRE
STEEL
Gauteng

011 864 8871

CENTRAL PROCUREMENT
& DISTRIBUTION CENTRE
FLUID CONTROL
Gauteng

011 917 0778

DURBAN
CASH & CARRY
KwaZulu-Natal

031 700 3737

DURBAN
STEEL & TUBE
KwaZulu-Natal

031 036 0115

EPPING (CAPE TOWN)
Western Cape

021 761 0355

EXPORTS
STEEL & TUBE
Gauteng

011 824 1800

GEORGE
Western Cape

044 874 0001

KIMBERLEY
Northern Cape

053 832 0550

KLERKSDORP
North West

018 487 5693

MAFIKENG
North West

018 381 5338

MANUFACTURING
Gauteng

011 873 3940

NELSPRUIT
STEEL
Mpumalanga

013 752 8282

NELSPRUIT
FLUID CONTROL
Mpumalanga

013 036 0060

**PIPES, FITTINGS
& VALVES**
Gauteng

010 045 6800

POLOKWANE
STEEL
Limpopo

015 036 0000

POLOKWANE
FLUID CONTROL
Limpopo

015 292 2001

PORT ELIZABETH
Eastern Cape

041 486 3988

PRETORIA
STEEL
Gauteng

012 800 9600

PRETORIA
FLUID CONTROL
Gauteng

012 036 2996

PROJECTS & CONTRACTS
Gauteng

012 800 9400

PUMPS & IRRIGATION
Gauteng

011 608 0155

RANDFONTEIN
Gauteng

011 412 3913

ROBERTVILLE
Gauteng

011 474 5335

RUSTENBURG
North West

087 549 3461

SPRINGS
Gauteng

011 811 5111

VAAL
Gauteng

016 981 2038

VEREENIGING
Gauteng

016 421 3260

WADEVILLE
STEEL & TUBE
Gauteng

011 824 1800

WETTON (CAPE TOWN)
Western Cape

021 761 9919

WITBANK
STEEL
Mpumalanga

013 692 8425

WITBANK
FLUID CONTROL
Mpumalanga

013 036 0008

WYNBERG
Gauteng

011 321 7900

WORCESTER
Western Cape

023 036 0011

AFRICA

WINDHOEK
Namibia

+264 83 330 1135

WALVIS BAY
Namibia

+264 64 203 132



HEAD OFFICE

Gauteng

Eastgate Lane Office Park
Building D, Ground Floor, West Wing
5 Iris rd, Bedfordview



EMAIL

info@sltrading.co.za



PHONE:

0860 10 27 99



WEBSITE

www.stewartsandlloydsvalves.co.za/