



**THE ABOVE GROUND
METERBOX RANGE**

Accuracy & Long-life stem from engineering excellence



Zonke Lite Above Ground Polymer Meterbox

Convex shaped above ground Meterbox (710mm high)

- A 15mm (or 20mm) Class "C"/"D" Polymer semi-positive rotary piston water meter.
- SABS approved municipal plastic 3 way trickle flow shut-off valve fitted upstream of the meter.
- Dual key operated locking mechanism for removal of cover for maintenance.

General

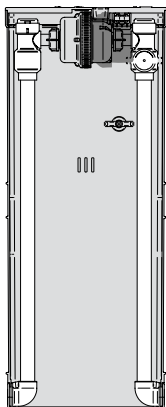
20mm Female threaded connection

Optional extra:

Fitted with flow restrictor and strainer.

Features:

SABS Approved ball valve with external handle fitted downstream of the meter.



Zonke Lite (Extended Lid) Above Ground Polymer Meterbox

Convex shaped above ground meterbox with extended lid. (800mm high)

- A 15mm (or 20mm) Class "C"/"D" Polymer semi-positive rotary piston water meter.
- SABS approved municipal plastic 3 way trickle flow shut-off valve fitted upstream of the meter.
- Dual key operated locking mechanism for removal of cover for maintenance.

General

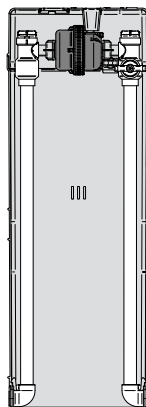
20mm Female threaded

Optional extra:

Can be upgraded to: Pre-paid, AMR or Fixed Water dispenser.

Features:

SABS Approved ball valve with external handle fitted downstream of the meter.



Zonke Above Ground Polymer Meterbox

An concave above ground Polymer meterbox. (710 mm high)

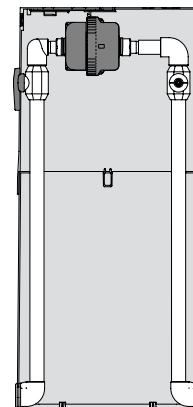
- A 15mm (20mm or 25mm) Class "C"/"D" Polymer semi-positive rotary piston water meter.
- SABS approved municipal plastic 3 way trickle flow shut-off valve fitted upstream of the meter.
- Sliding couplings connect the inlet and outlet of the water meter and allow replacement.
- Dual key operated locking mechanism for removal of cover for maintenance.

General

20mm Female threaded connections.

Features:

- Sliding cover insert allows reading of water meter reading and serial number.
- In case of pre-paid water option the sliding cover insert also facilitates reading of the electronic display.





The Wall Mounted Polymer Meterbox

A Polymer meterbox for wall mounting, with 20mm female brass BSP thread coupling.

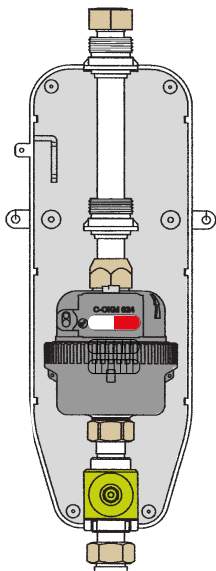
The meterbox contains:

- A 15mm (or 20mm) Class "C"/"D" Polymer semi-positive rotary piston water meter.
- 3 way trickle flow shut-off valve.
- Sliding couplings connect the inlet and outlet of the water meter and allow replacement of same.

Features

Can be upgraded to:

- Fixed water dispenser
- Pre-paid
- AMR/AMI



The EZ3 Above Ground Polymer meterbox

The meterbox contains:

- A 15mm (or 20mm) Class "C"/"D" Polymer semi-positive rotary piston water meter.
- 3 way trickle flow shut-off valve positioned before the meter and a consumer 2-way valve positioned downstream of the water meter.
- Sliding couplings connect the inlet and outlet of the water meter and allow replacement of same.

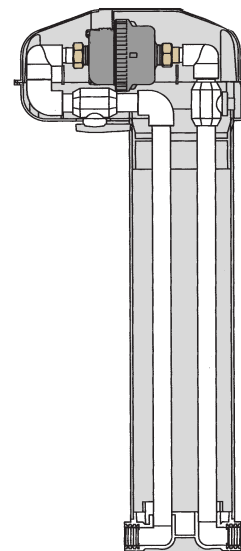
General

Internal piping Ø25mm HDPE and inlet and outlet of meterbox has Ø20mm (3/4") nylon reinforced female threads.

Features

Can be upgraded to:

- AMR/AMI (automatic meter reading).



Water Meterbox Typical Specifications

THE ZONKE LITE STANDARD POLYMER ABOVE GROUND WATER METERBOX

Convex shaped polymer above ground meter box (710mm high x 280mm wide x 100mm depth). The meter box consists of a 15mm (or 20mm) Class "C" polymer semi positive rotary piston water meter and a municipal 3-way trickle flow shut-off valve positioned before the meter. Sliding couplings connect the inlet and outlet of the water meter that allows for replacement. Closed cover with security clips.

Each water meter is verified in a SANAS 0259 accredited laboratory..

THE ZONKE LITE EXTENDED LID POLYMER ABOVE GROUND WATER METERBOX

Convex shaped polymer above ground meter box (800mm high x 280mm wide x 100mm depth). The meter box consists of a 15mm (or 20mm) Class "C" polymer semi positive rotary piston water meter and a municipal 3-way trickle flow shut-off valve positioned before the meter. Sliding couplings connect the inlet and outlet of the water meter that allows for replacement. Closed cover with security clips.

Each water meter is verified in a SANAS 0259 accredited laboratory.

THE ZONKE ABOVE GROUND POLYMER WATERMETER BOX

Polymer multipurpose concave above ground meterbox (710mm high) housing a 15mm (20mm or 25mm) semi-positive rotary piston Class "C" water meter. A 3-way trickle flow shut-off valve is located upstream of the water meter, and a 2-way valve with exposed handle for the consumer is located downstream of the meter, sliding couplings connect the inlet and outlet of the water meter and allow replacement; internal piping is Ø25mm HDPE and joints are fusion welded. The meterbox inlet and outlets are Ø20mm (3/4") BSP female Polymer threads.

A sliding cover allows reading of the water meter cyclometer and the serial number. In the case of pre-paid, the electronic reading can also be seen. A dual key operated locking mechanism allows removal of the top half of the meterbox for maintenance.

Each water meter is verified in a SANAS 0259 accredited laboratory.

THE WALL MOUNTED POLYMER WATER METERBOX

15mm Polymer semi-positive rotary piston Class "C" water meter in a wall mounted meterbox containing a municipal 3-way trickle flow shut-off on the inlet side of the meter and sliding couplings to facilitate replacing the meter. The inlet and outlets are 20mm brass female BSP threaded nuts. The meterbox can easily be upgraded to pre-paid metering or automatic meter reading (AMR/AMI). The water meter complete with non-return valve and pulse output (1 pulse per 0.5 litres) is approved under the Trade Metrology act and regulations to SANS 1529-1:2006 Class "C" specifications.

Each water meter is verified in a SANAS 0259 accredited laboratory.

THE EZ3 ABOVE GROUND POLYMER METERBOX

Polymer EZ3 above ground meterbox housing a 15mm semi-positive rotary piston Class "C" water meter, a 3-way trickle flow shut-off valve is located upstream of the water meter and a 2-way ballcock with exposed handle for the consumer is located downstream of the meter. The internal piping is Ø25mm HDPE and the inlet and outlet are Ø20mm (3/4") BSP glass nylon reinforced threads, joints are fusion welded. The meterbox can easily be upgraded to automatic meter reading (AMR/AMI). The water meter complete with non-return valve and pulse output is approved under the Trade Metrology act and regulations to SANS 1529-1: 2006 Class "C" specification.

Each water meter is verified in a SANAS 0259 accredited laboratory.

WATERMETER OPTIONS

Volumetric semi-positive displacement 15, 20mm and 25mm KSM Polymer bodied water meter complete with non-return valve and pulse output (1 pulse per 0.5 litres) are approved under the Trade Metrology act and regulations to SANS 1529-1; 2006 Class "C"/"D" specifications. Each water meter is verified in a SANAS 0259 accredited laboratory.

15 and 20mm dezification resistant (DZR) brass bodied volumetric semi-positive displacement water meter complete with non-return valve and pulse output (1 pulse per 0.5 litres) are approved under the Trade Metrology act and regulations to SANS 1529-1; 2006 Class "C"/"D" specification. Each meter is verified in a SANAS 0259 accredited laboratory.

Warranty

All goods are tested and inspected prior to despatch. In the event of defects resulting from faulty workmanship or materials, such goods will be replaced/repared at our discretion, free of charge at the factory, but no responsibility will be accepted for any direct or consequential damage. This warranty covers the malfunction of a correctly installed item due to a manufacturing fault, but does not cover wear and tear considered normal at the locality of installation. Product warranty 12 months from date of delivery, which shall be the date on the invoice.

Elster Kent Metering (Pty) Ltd

PO Box 201, Auckland Park 2006

JOHANNESBURG Tel: (011) 470-4900 Fax: (011) 474-0175
DURBAN Cell: 082 455 3553
CAPE TOWN Cell: 082 455 3551
BLOEMFONTEIN Cell: 082 457 5945
PORT ELIZABETH Cell: 082 458-3439

© 2015 Honeywell International Inc.
All Rights Reserved. The company's
policy is one of continuous improvement
and the right is reserved to modify the
specifications without notice.

www.elstermetering.co.za
www.honeywell.com

Honeywell